



Commercial CCR-33M 75 Ohm DC-3GHz SPDT Switch Latching

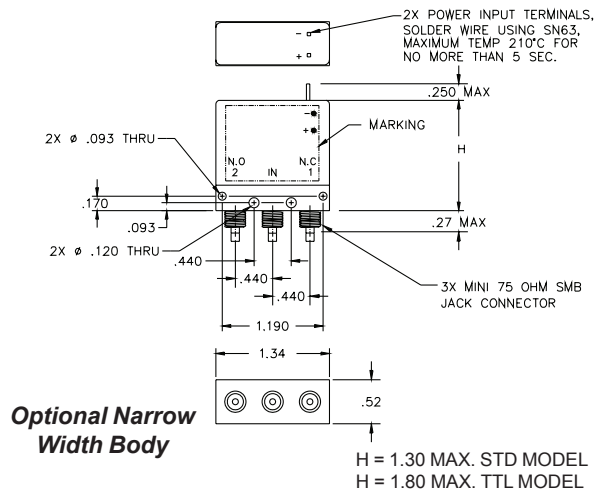
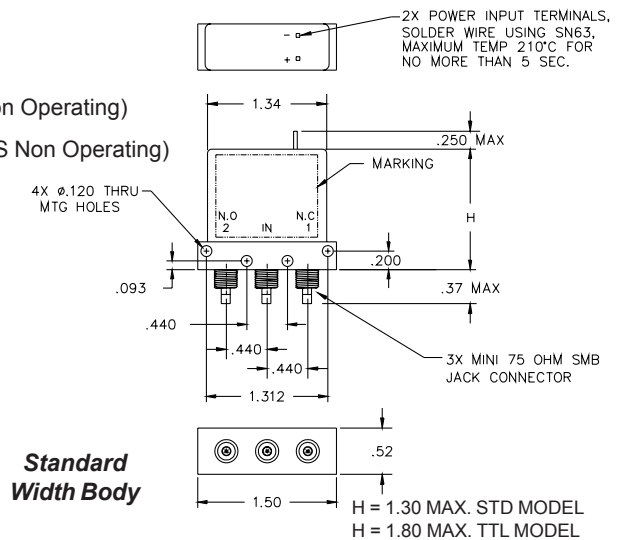
The CCR-33M switch is the first of its series, expanding our product line to include 75-Ohm designs. This SPDT is designed for optimum performance in 75-Ohm applications switching signals from a common input to either of two outputs. The characteristic impedance is 75 Ohms. The switches are small with connector spacing compatible with mini-SMB connectors.

The CCR-33M series switch is offered with either a failsafe or latching actuator. This design is compatible with the two most common mounting hole patterns.

Specifications

| | | | | |
|---------------------------|---|-----|-----|----|
| RF Contacts: | Break before make | | | |
| Actuator | Voltage (VDC) 20°C | 12 | 15 | 28 |
| | Current (mA) | 140 | 115 | 65 |
| Switching Time: | 10 msec max | | | |
| Connectors: | mini-SMB 75 Ohm Jack. In accordance with IEC 169-10, CECC 22 130, US MIL-C-39012 | | | |
| Weight: | 1.65 oz. max | | | |
| Temperature Range: | -40°C to +65°C (Operating) | | | |
| Shock: | MIL-STD-202 Method 213, Condition D (500G Non Operating) | | | |
| Vibration: | MIL-STD-202 Method 214, Condition D (10G RMS Non Operating) | | | |
| Humidity: | Moisture Seal Available | | | |
| MTBF: | 7.3 Million Hours (MIL-HDBK-217F Fixed, 25°C, <1 Cycle per hour) | | | |

| Specifications | DC-1 GHz | 1-3 GHz |
|----------------------|----------|---------|
| VSWR (max) | 1.20:1 | 1.30:1 |
| Insertion Loss (min) | 0.20 dB | 0.30 dB |
| Isolation (max) | 80.0 dB | 70.0 dB |



Specifications subject to change without notice.

www.teledynecoax.com
email: coax@teledyne.com

Tel: (800) 351-7368
10/2007

