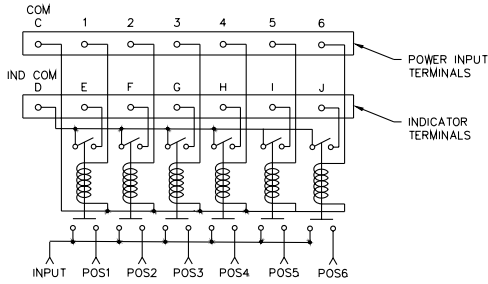


Commercial CCS-18

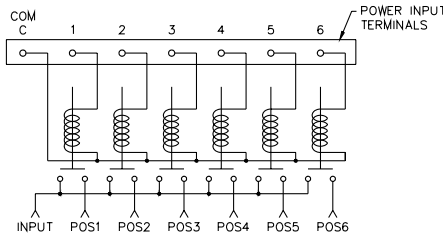
High Power DC-12 GHz Multi - Throw Switch

SP3T to SP6T versions only

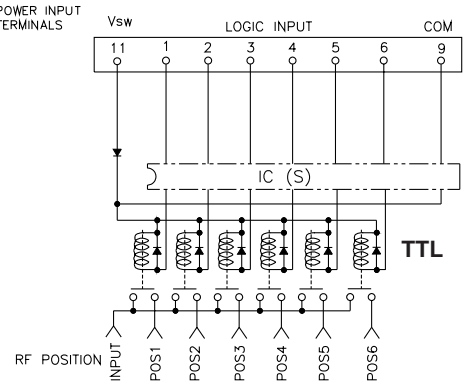
Normally Open



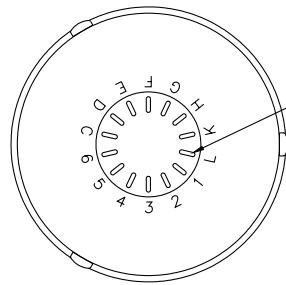
Indicators



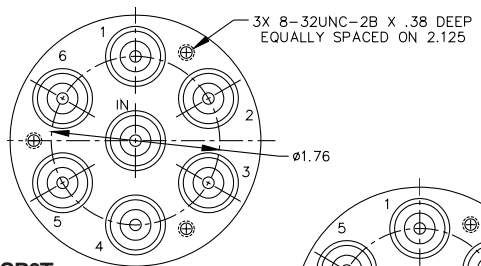
Analog



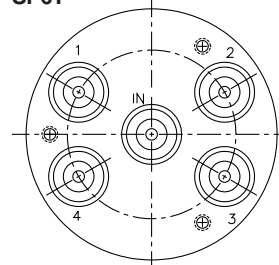
TTL



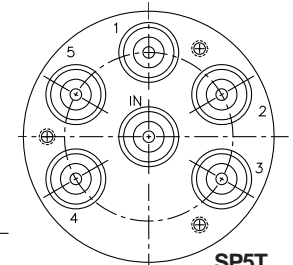
14X SOLDER TERMINALS
SOLDER WIRE USING SN63,
MAXIMUM TEMP 210°C FOR
NO MORE THAN 5 SEC.



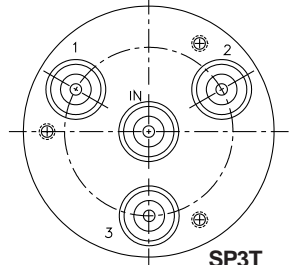
SP6T



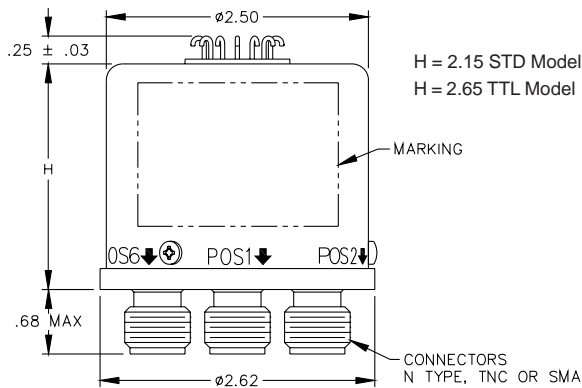
SP4T



SP5T

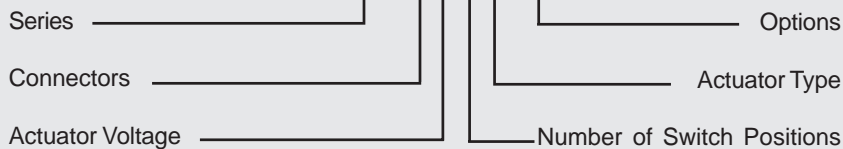


SP3T



Part Numbering System for CCS-18 (Normally Open)

CCS-18 N 1 5 O - T



| Connector | Actuator Voltage | Number of Positions | Actuator Type | Options |
|------------------|------------------------|---------------------|--------------------------|-----------------------------|
| S: SMA Female | 1: 28Vdc Normally Open | 3: SP3T | O: No Indicator Contacts | T: TTL Drivers with Diodes |
| N: N type Female | 2: 15Vdc Normally Open | 4: SP4T | C: Indicator Contacts | R: Positive + Common |
| T: TNC Female* | 3: 12Vdc Normally Open | 5: SP5T | | TD: TTL Driver with Decoder |
| | | 6: SP6T | | |

For other options contact Factory

See additional Datasheet for SP7T and SP8T versions



A Unit of Teledyne Electronics and Communications

Specifications subject to change without notice.

www.rfswitches.com
email: switches@teledyne.com

Tel: 800-284-7007